



POUSADA  
TRIJUNÇÃO

Bahia, Goiás e  
Minas Gerais por



FACTSHEET 2024



# DISCOVER THE HIDDEN PLACES AND CHARMS OF BRAZIL

OCANTO, A HOSPITALITY BRAND,  
CURATES GENUINE CONNECTIONS IN BRAZIL'S  
HIDDEN PLACES, OFFERING COMFORT  
AND HIGH STANDARDS IN SERVICE  
AND GASTRONOMY.

# THE HOST OF CERRADO

OCANTO IS DEEPLY CONNECTED TO EACH DESTINATION'S  
BIOMES AND DISCOVERIES, EXPERIENCED UNIQUELY  
AND IMMERSIVELY



## INTEGRATED ARCHITECTURE

ARCHITECTURE IN HARMONY WITH THE LANDSCAPE  
AND CULTURE OF EACH DESTINATION



## HAUTE CUISINE

BASED ON NATIVE AND LOCALLY PRODUCED INGREDIENTS



## CULTURE AND HISTORY

CONNECTED TO THE ESSENCE  
AND VOCATION OF EACH REGION



## SERVICE EXCELLENCE

WARM AND PERSONALIZED CARE

# LABELS AND CERTIFICATIONS



BRAZILIAN LUXURY  
TRAVEL ASSOCIATION



# OUR DESTINATIONS

OCANTO IS COMMITTED TO CREATING NEW  
MODELS OF REGENERATIVE TOURISM.

WE FOSTER GENUINE CONNECTIONS BETWEEN TRAVELERS  
AND OUR DESTINATIONS, WITH A COMMITMENT TO  
PRESERVING BIODIVERSITY AND ENHANCING THE  
QUALITY OF LIFE IN LOCAL COMMUNITIES



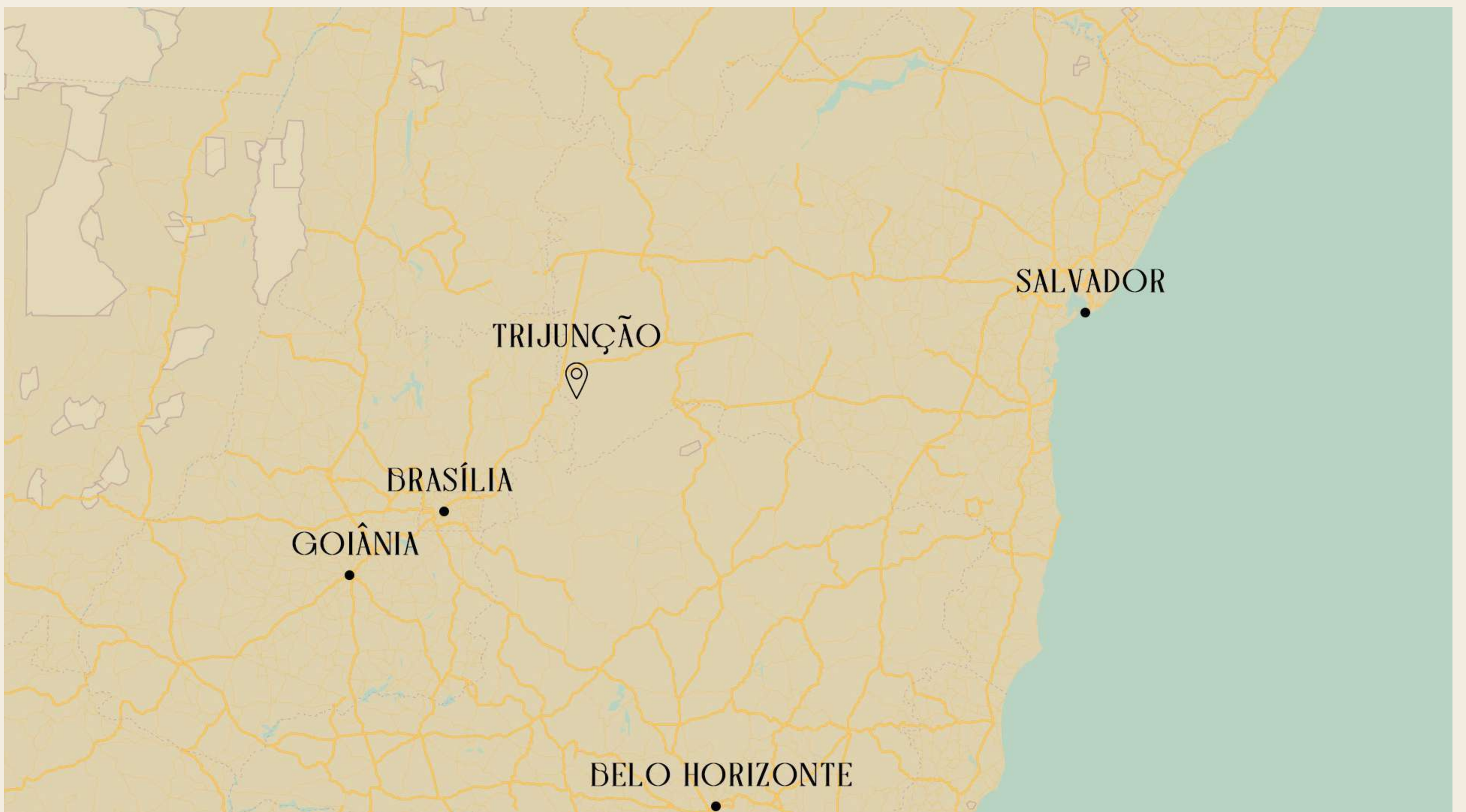
CERRADO  
TRIJUNÇÃO

ATLANTIC FOREST  
*PARATY AND TRANCOSO*



# AN IMMERSIVE JOURNEY INTO THE HEART OF THE CERRADO

A UNIQUE PLACE, ON THE BORDER OF BAHIA, GOIÁS AND MINAS GERAIS  
(BRAZILIAN STATES), IN THE MOST BIODIVERSE SAVANNAH OF THE WORLD.



“HEART GROWS FROM EVERYWHERE. HEART FLOWS LIKE A STREAM FLOWING THROUGH MOUNTAINS AND VINEYARDS, FORESTS AND MEADOWS. HEART MIXES LOVE. EVERYTHING FITS”

GUIMARÃES ROSA – GRANDE SERTÃO: VEREDAS

## AUTHENTIC AND SOPHISTICATED IN ACCOMMODATIONS, WILD IN EXPERENCES



THE TRIJUNÇÃO FARM DEDICATES MORE THAN 20,000 HECTARES TO BIODIVERSITY CONSERVATION, FORMING AN IMPORTANT ECOLOGICAL CORRIDOR WITH GRANDE SERTÃO VEREDAS NATIONAL PARK.



POUSADA TRIJUNÇÃO IS, ABOVE ALL, A CONSERVATION PROJECT. A SOPHISTICATED LODGE WITH ONLY 7 SUITES AND 1 VILLA WITH 2 MORE ROOMS, THAT CONNECTS TRAVELERS TO THE CERRADO IN AN IMMERSIVE WAY.

# GENUINE CONNECTION

SEVEN HIGH STANDARD SUITES | ARCHITECTURE INTEGRATED INTO THE LANDSCAPE  
| IMMERSIVE EXPERIENCES FROM DAWN TO THE STARRIEST NIGHTS | GENUINE  
CONNECTION WITH THE SURROUNDING FAUNA, FLORA AND WILDLIFE



BREATHE IN



# WELLNESS & ENCHANTMENT

HEATED POOL | SAUNA | OFURO | MASSAGE ROOM  
CONNECTION WITH THE SURROUNDING FAUNA, FLORA AND WILDLIFE



## GASTRONOMY

POETIC BLEND OF ACCENTS AND FLAVORS FROM BAHIA, GOIÁS AND MINAS GERAIS  
INDOOR CUISINE: À LA CARTE DISHES | OUTDOOR CUISINE: FIRE PIT BARBECUE  
AND SURPRISES IN OUTDOOR ACTIVITIES



BREATHE IN



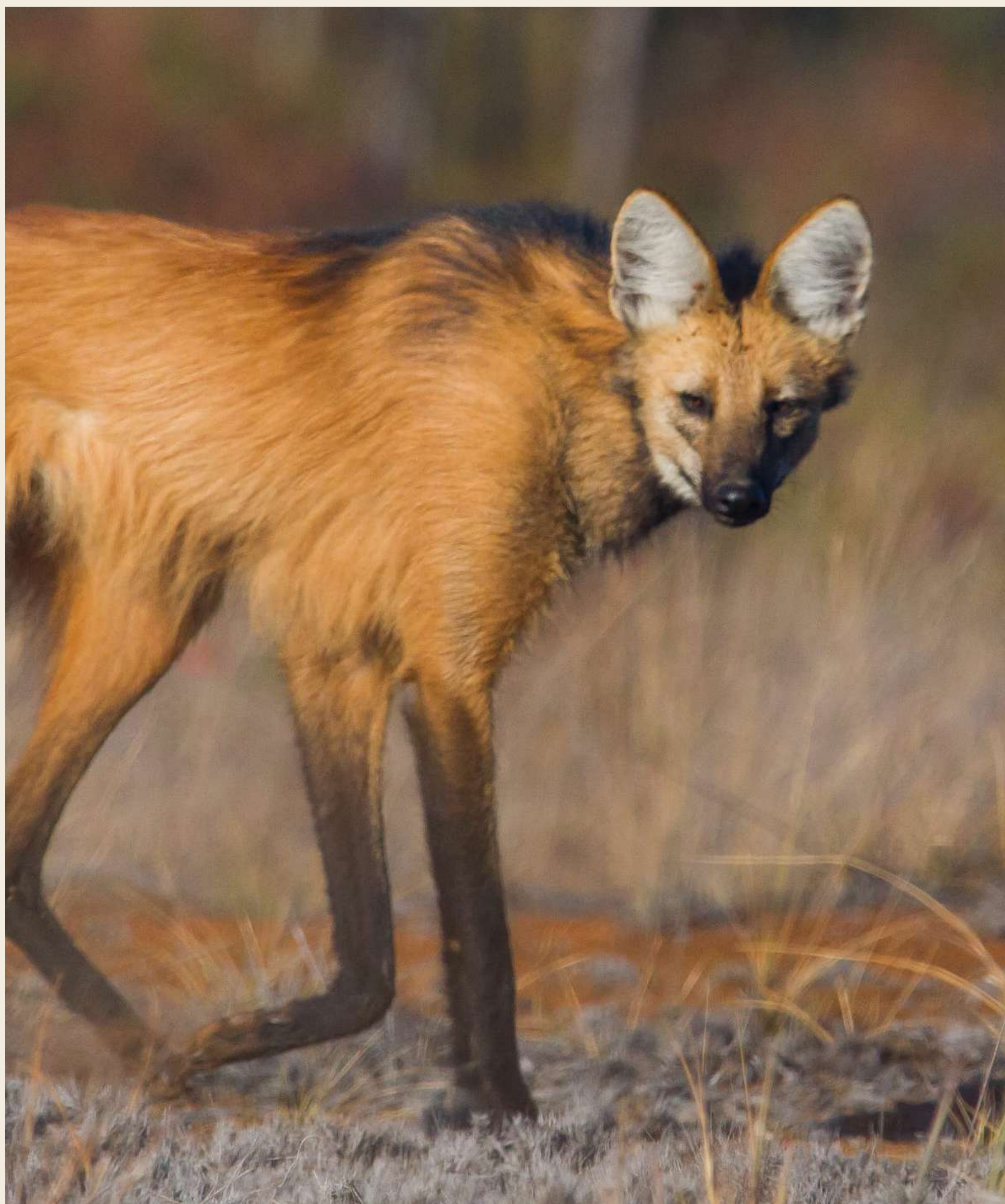
"WE PREFER FRESH AND ORGANIC INGREDIENTS, WHENEVER POSSIBLE PRODUCED LOCALLY





# CONSERVATION AREA

**TRIJUNÇÃO IS, ABOVE ALL, A CONSERVATION PROJECT**








**28,000 HECTARES AND ALMOST THREE DECADES DEDICATED TO CONSERVATION PROJECTS AND RESEARCH INITIATIVES, IN PARTNERSHIP WITH ORGANIZATIONS SUCH AS ONÇAFARI AND EMBRAPA.**

THE FARM KEEPS 90% OF ITS TERRITORY ENTIRELY PRESERVED, PART OF WHICH BORDERS THE GRANDE SERTÃO VEREDAS NATIONAL PARK, FORMING AN ECOLOGICAL CORRIDOR AND ENSURING THAT NATIVE SPECIES LIVE FREELY AND PROTECTED.



# ACCOMMODATIONS

THERE ARE 7 SUITES AND 1 VILLA WITH 2 MORE SUITES, INTEGRATED INTO THE LANDSCAPE, AND SOPHISTICATED ENVIRONMENTS.

-  KING SIZE BED
-  AIR CONDITIONING
-  MINIBAR
-  TROUSSEAU COTTON SHEETS
-  SAFE
-  AMENITIES
-  TROUSSEAU TOWELS AND BATHROBES

SUITES				
ACCOMMODATIONS	UN.	M²	BEDS	DIFFERENTIALS
STANDARD ROOM	3	30M²	1 KING +1 SINGLE	CONFORT AND PRACTICALITY
PREMIUM SUITE	3	60 M²	1 KING +2 SINGLE	2 AMBIENTS
MASTER SUITE	1	90 M²	1 KING +2 SINGLE	2 AMBIENTS, 2 BALCONIES, OFURO, DOUBLE SINK

VILLA				
ACCOMMODATIONS	UN.	M²	BEDS	DIFFERENTIALS
VILLA JATOBÁ	1	217M²	2 KING +4 SINGLE	2 SUITES, LIVING-DINING ROOM, KITCHEN, CLOSET AND OFURO



# STANDARD ROOM

THE THREE ROOMS AVAILABLE IN THIS CATEGORY ARE BRIGHT AND AIRY, WITH COZY BEDROOMS AND COMFORTABLE BATHROOMS FEATURING DELIGHTFUL SHOWERS.



KING SIZE BED



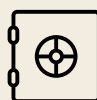
TROUSSEAU COTTON SHEETS



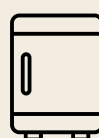
TROUSSEAU TOWELS AND BATHROBES



AIR CONDITIONING



SAFE



MINIBAR



AMENITIES

ACCOMMODATIONS	UN.	M <sup>2</sup>	BEDS	EXTRA
STANDARD ROOM	3	30M <sup>2</sup>	1 KING +1 SINGLE	X



# PREMIUM SUITE

THE THREE SUITES AVAILABLE IN THE CATEGORY ARE SPACIOUS AND COMFORTABLE, WITH A LIVING ROOM AND BEDROOM. TWO SINGLE BEDS CAN BE ADDED.



KING SIZE BED



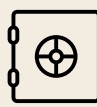
TROUSSEAU COTTON SHEETS



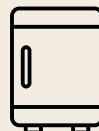
TROUSSEAU TOWELS AND BATHROBES



AIR CONDITIONING



SAFE

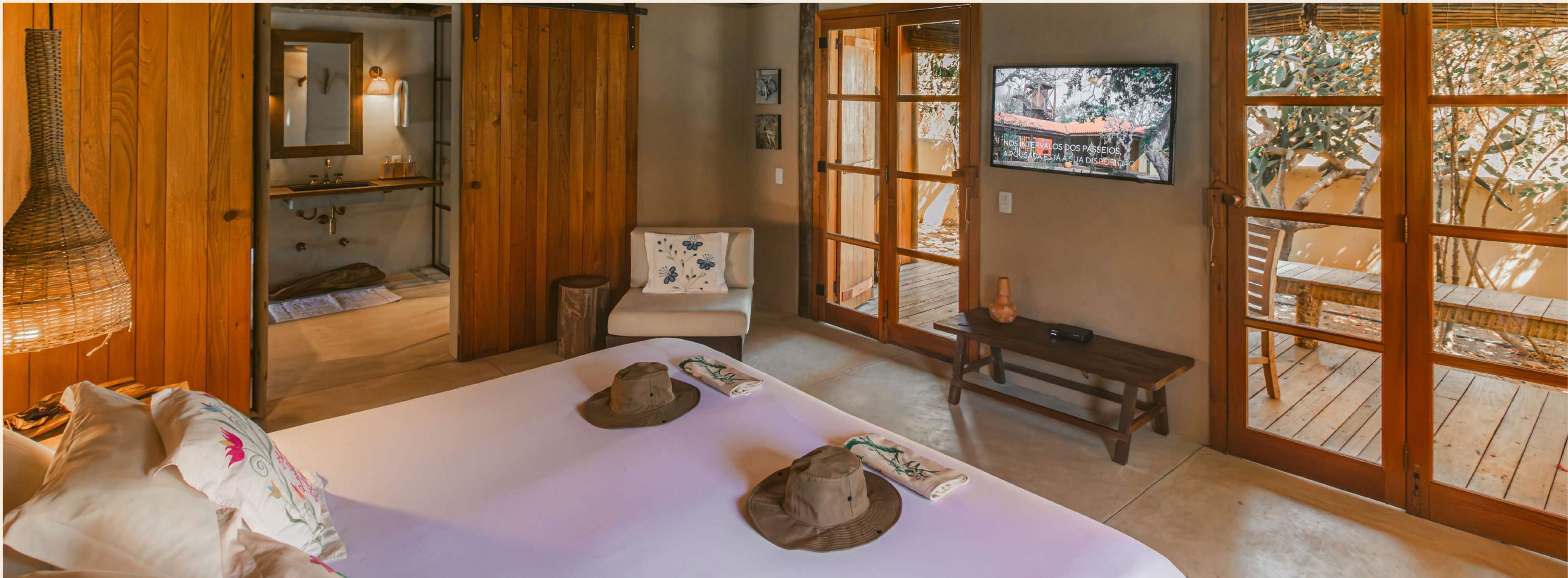


MINIBAR



AMENITIES

ACCOMMODATIONS	UN.	M <sup>2</sup>	BEDS	EXTRA
PREMIUM SUITE	3	60 M <sup>2</sup>	1 KING + 2 SINGLE	2 AMBIENTS



# MASTER SUITE

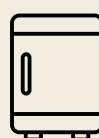
THERE IS ONLY ONE SUITE AVAILABLE IN THIS CATEGORY, THAT IS THE LODGE’S LARGEST ROOM.  
IT FEATURES TWO ROOMS – A LIVING ROOM AND A BEDROOM WITH TWO BALCONIES.  
THE BATHROOM INCLUDES TWO SINKS, SHOWER AND AN OFURO.



KING SIZE BED



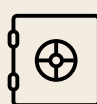
AIR CONDITIONING



MINIBAR



TROUSSEAU COTTON SHEETS



SAFE



AMENITIES



TROUSSEAU TOWELS AND BATHROBES

ACCOMMODATIONS	UN.	M <sup>2</sup>	BEDS	EXTRA
MASTER SUITE	1	90 M <sup>2</sup>	1 KING +2 SINGLE	2 AMBIENTS, 2 BALCONIES, OFURO, DOUBLE SINK



POUSADA  
TRIJUNÇÃO



# VILLA JATOBÁ

A PRIVATE HOUSE FULLY INTEGRATED INTO THE TRIJUNÇÃO LANDSCAPE,  
IDEAL FOR GUESTS WHO PREFER A MORE PRIVATE SETTING.



KING SIZE BED



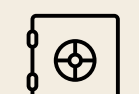
TROUSSEAU COTTON SHEETS



TROUSSEAU TOWELS AND BATHROBES



AIR CONDITIONING



SAFE



MINIBAR



AMENITIES

ACCOMMODATIONS	UN.	M <sup>2</sup>	BEDS	DIFFERENTIALS
VILLA JATOBÁ	1	217 M <sup>2</sup>	2 KING +4 SINGLE	2 SUITES, LIVING-DINING ROOM, KITCHEN, CLOSET AND OFURO

# O Cantinho

CHILDREN ARE VERY WELCOME AT THE LODGE, WITH SNACKS AND SURPRISES FROM THE MOMENT THEY ARRIVE. EACH EXPERIENCE IS CAREFULLY PLANNED SO THAT THE LITTLE ONES ENJOY THE TRIJUNÇÃO AS MUCH AS THE ADULTS

CHILDREN ARE VERY WELCOME AT THE LODGE, WITH SNACKS AND SURPRISES FROM THE MOMENT THEY ARRIVE. EACH EXPERIENCE IS CAREFULLY PLANNED SO THAT THE LITTLE ONES ENJOY THE TRIJUNÇÃO AS MUCH AS THE ADULTS



# STORIES TO TELL

WE BRING TOGETHER UNIQUE EXPERIENCES OF IMMERSION  
IN THE BIOME AND WILDLIFE WATCHING.

THE WORD SAFARI COMES FROM THE SWAHILI LANGUAGE AND MEANS  
'JOURNEY', WHICH COMES FROM THE ARABIC س ف ر (SAFARA), WHICH MEANS  
'TRAVEL'. FOR US, SAFARI IS AN IMMERSIVE JOURNEY IN THE CERRADO.

## GRANDIOSITY

THE CERRADO COVERS AROUND 2 MILLION KM² AND REPRESENTS 24% OF BRAZIL'S TERRITORY.  
THE BIOME SPREADS ACROSS 15 STATES AND HOLDS THE HEADWATERS OF THE COUNTRY'S MAIN RIVERS



## BIODIVERSITY

CERRADO IS THE MOST BIODIVERSE SAVANNAH IN THE WORLD, HOME TO AROUND  
1050 SPECIES OF VERTEBRATES AND MORE THAN 13,000 SPECIES OF PLANTS.



BREATHE OUT

# MANED WOLF SIGHTING

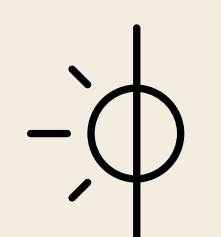
HAVING THE OPPORTUNITY TO SEE THE SYMBOLIC ANIMAL OF THE CERRADO IN THE WILD IS A UNIQUE EXPERIENCE. TODAY, FIVE WOLVES ARE MONITORED BY ONÇAFARI IN TRIJUNÇÃO - IN 2023, THE SIGHTING RATE WAS 75%.



- THE MANED WOLF (CHRYSOCYON BRACHYURUS) HAS NOCTURNAL HABITS, THAT'S WHY SIGHTINGS HAPPEN BEFORE SUNRISE OR AT THE END OF THE DAY
- OPEN CAR TOUR
- THERE'S A CHANCE TO SEE OTHER ANIMALS
- WOLF MONITORING IS A PROJECT IN PARTNERSHIP WITH ONÇAFARI
- CURRENTLY, ONÇAFARI MONITORS FIVE WOLVES IN TRIJUNÇÃO, WITH A SIGHTING RATE OF 75% IN 2023



LIGHT (SAFARI'S CAR)



DAY AND NIGHT



3H DURATION

# BIRDWATCHING

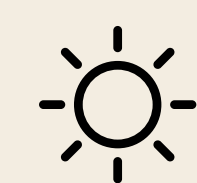
THERE'S A LOT OF LIFE AND COLOR IN THE CERRADO SKY, AND THE JOURNEY STARTS BEFORE SUNRISE, WHERE MORE THAN 270 SPECIES HAVE BEEN CATALOGUED.



- BIRDWATCHING ACCOMPANIED BY AN EXPERT BIOLOGIST
- OVER 270 BIRD SPECIES CATALOGED ON THE PROPERTY
- OBSERVATIONS MAY INCLUDE HAWKS, WOODPECKERS, AND MACAWS, ALONGSIDE OTHER RARE AND BEAUTIFUL SPECIES
- TOURS BEGIN AT THE POUSADA'S OWN LOOKOUT, TIMED WITH THE SUNRISE



LIGHT  
(CAR AND ON FOOT)



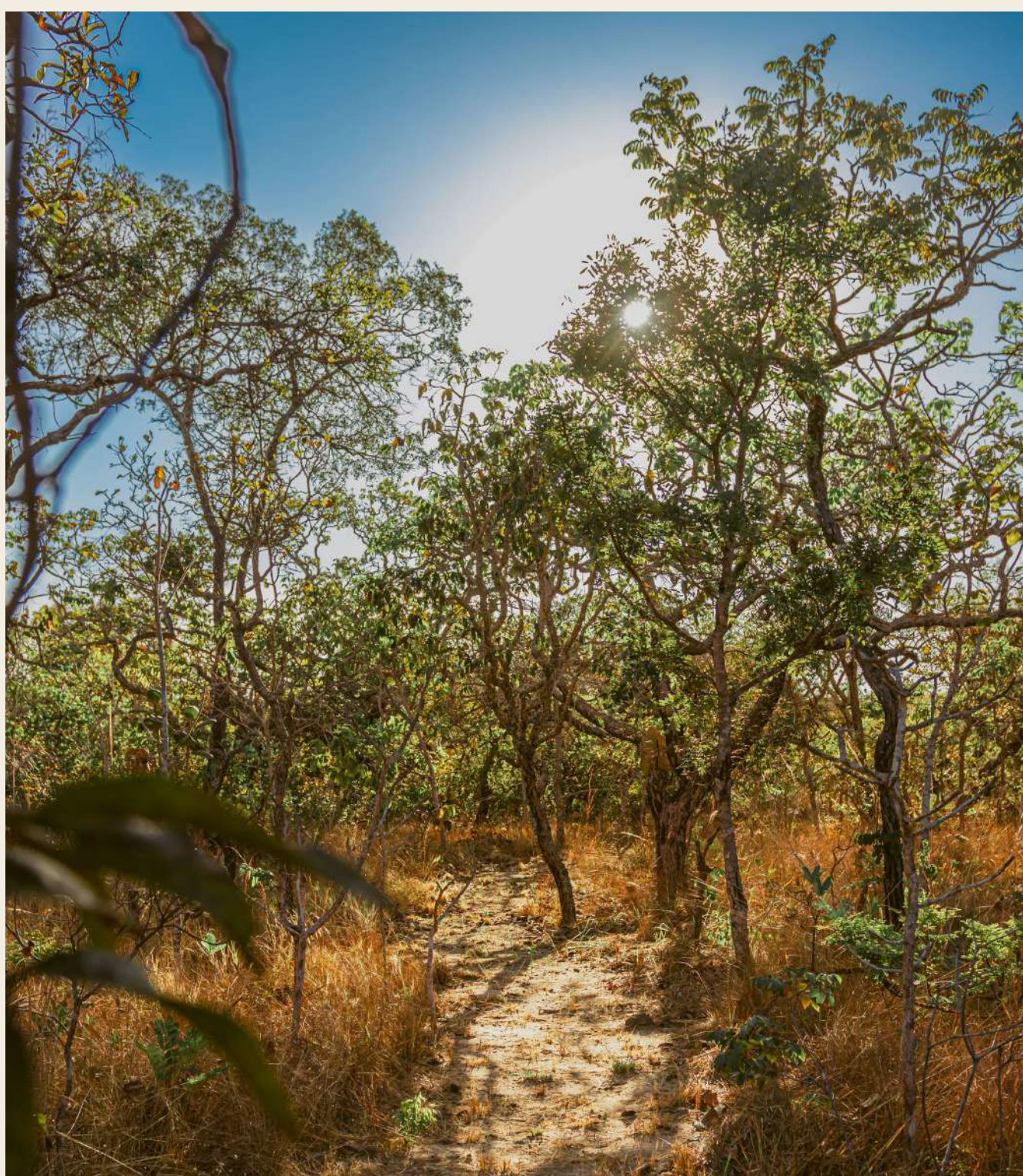
DAY OUTINGS



2-3H DURATION

# SUSSUARANA CROSSING

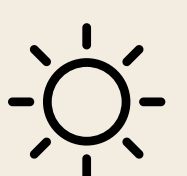
A 4.9 KM HIKING JOURNEY, FULL OF DISCOVERIES AND GENUINE CONNECTION  
WITH THE BIOME, AT THE FOOT OF THE RED WALLS.



- LOCATED 4.9 KM AWAY WITH A KNOWLEDGEABLE GUIDE
- JOURNEY LEADING TO THE BASE OF THE RED WALL
- SITUATED AT THE BOUNDARY BETWEEN THE FORMOSO (SÃO FRANCISCO) AND CORRENTE (AMAZONAS) RIVER BASINS
- CONNECTION WITH THE LOCAL FLORA AND GEOLOGICAL FEATURES OF THE REGION
- OPTIONAL SECTION INCLUDES ROPE DESCENT FROM THE WALL
- MANDATORY ATTIRE INCLUDES LONG LEGGINGS, PANTS, AND CLOSED SHOES



MODERATE (ON FOOT)



DAY OUTINGS



2H DURATION

# BOTANICAL TRAIL

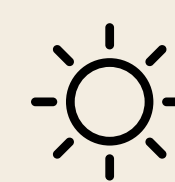
A SENSORY EXPERIENCE FILLED WITH AROMAS, FLAVORS, TEXTURES  
AND TRADITIONAL KNOWLEDGE. A WALK THROUGH ICONIC SPECIES OF  
THE CERRADO, GUIDED BY A BOTANICAL EXPERT



- GUIDED BY A BIOLOGIST SPECIALIZING IN BOTANY
- LEARN ABOUT TRADITIONAL PRACTICES AND BELIEFS, AND DISCOVER PLANTS USED IN COOKING, CRAFTS, AND MEDICINAL PURPOSES
- SENSORY EXPERIENCE THROUGH THE COLORS, AROMAS, TEXTURES AND CHARMS OF DIFFERENT SPECIES
- OPPORTUNITY TO OBSERVE SOME OF THE 13,000 SPECIES ALREADY IDENTIFIED IN THE BIOME



LIGHT



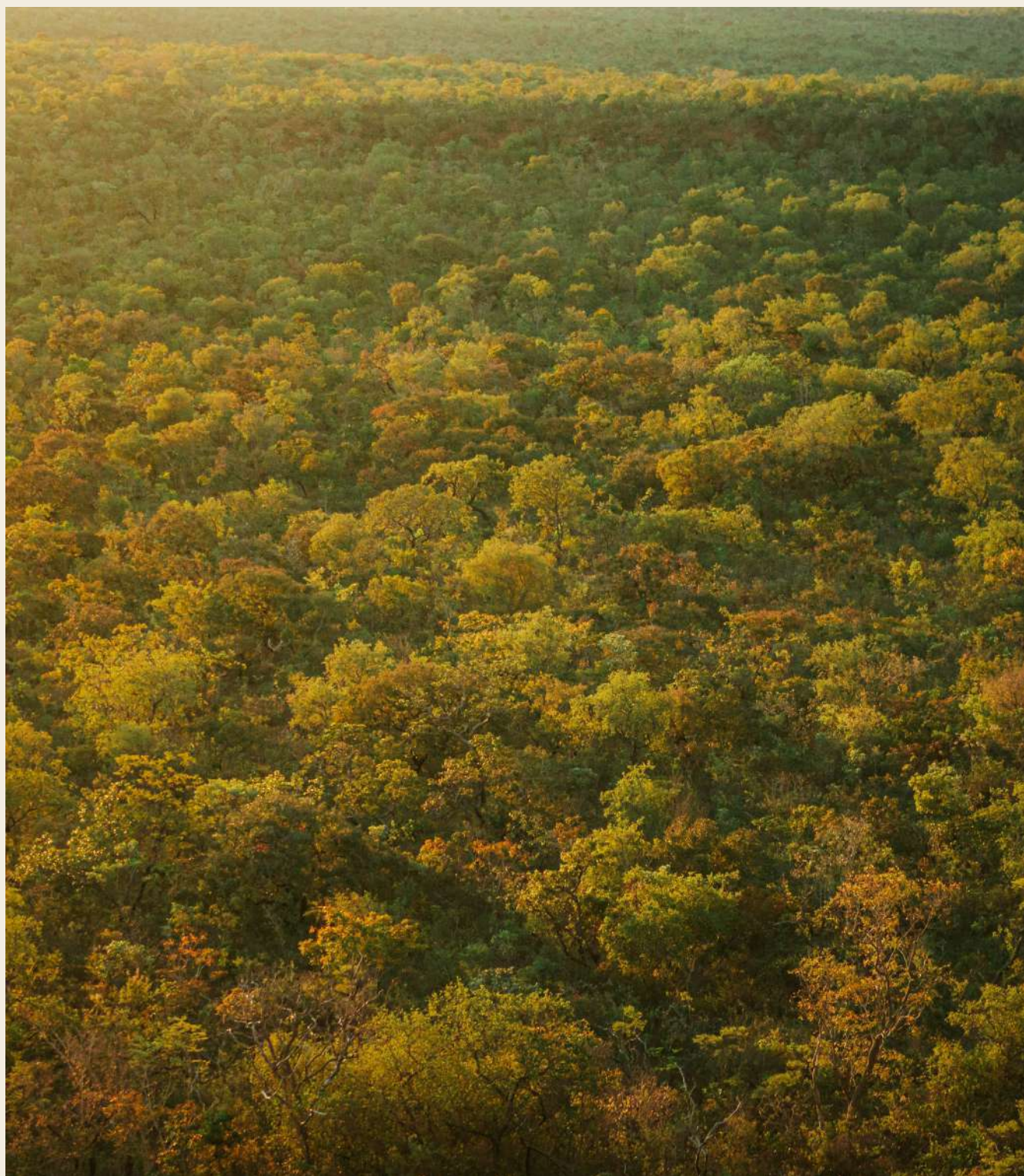
DAY OUTINGS



2H DURATION

# SUNSET AT THE TRIJUNÇÃO VIEWPOINT

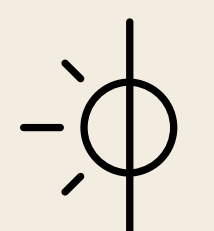
WATCH THE SUNSET FROM A SCENIC PLACE WHERE THE THREE STATES MEET AND  
DISCOVER THE BIOME DURING THE NIGHT SAFARI BACK TO THE LODGE.



- VISIT THE TRIJUNÇÃO VIEWPOINT AT THE TOP OF AN ESCARPMENT
- THE VIEWPOINT IS SITUATED AT THE IBGE LANDMARK MARKING THE BORDER BETWEEN THREE STATES: BAHIA, GOIÁS, AND MINAS GERAIS
- PANORAMIC VIEW OF THE RED WALLS AND THE BEGINNING OF THE SERRA GERAL



LIGHT (SAFARI CAR)



DAY AND NIGHT  
OUTINGS



3H DURATION

# NATIONAL PARK GRANDE SERTÃO VEREDAS

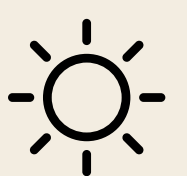
POUSADA TRIJUNÇÃO FORMS AN ECOLOGICAL CORRIDOR WITH THE PARK. THE TOUR IS AN OPPORTUNITY TO EXPLORE AREAS OF CLOSED CERRADO, FIELDS AND FOOTPATHS.



- GRANDE SERTÃO VEREDAS IS ONE OF THE PRIMARY NATIONAL PARKS IN THE CERRADO
- OPPORTUNITY TO LEARN MORE ABOUT THE FAUNA AND FLORA OF THE CERRADO IN ITS NATURAL HABITAT
- SUNNY AND EARTHY TONES FILL THE EYES DURING THE JOURNEY
- WALK THROUGH AREAS OF CLOSED CERRADO, FIELDS, AND FOOTPATHS



LIGHT (SAFARI CAR)



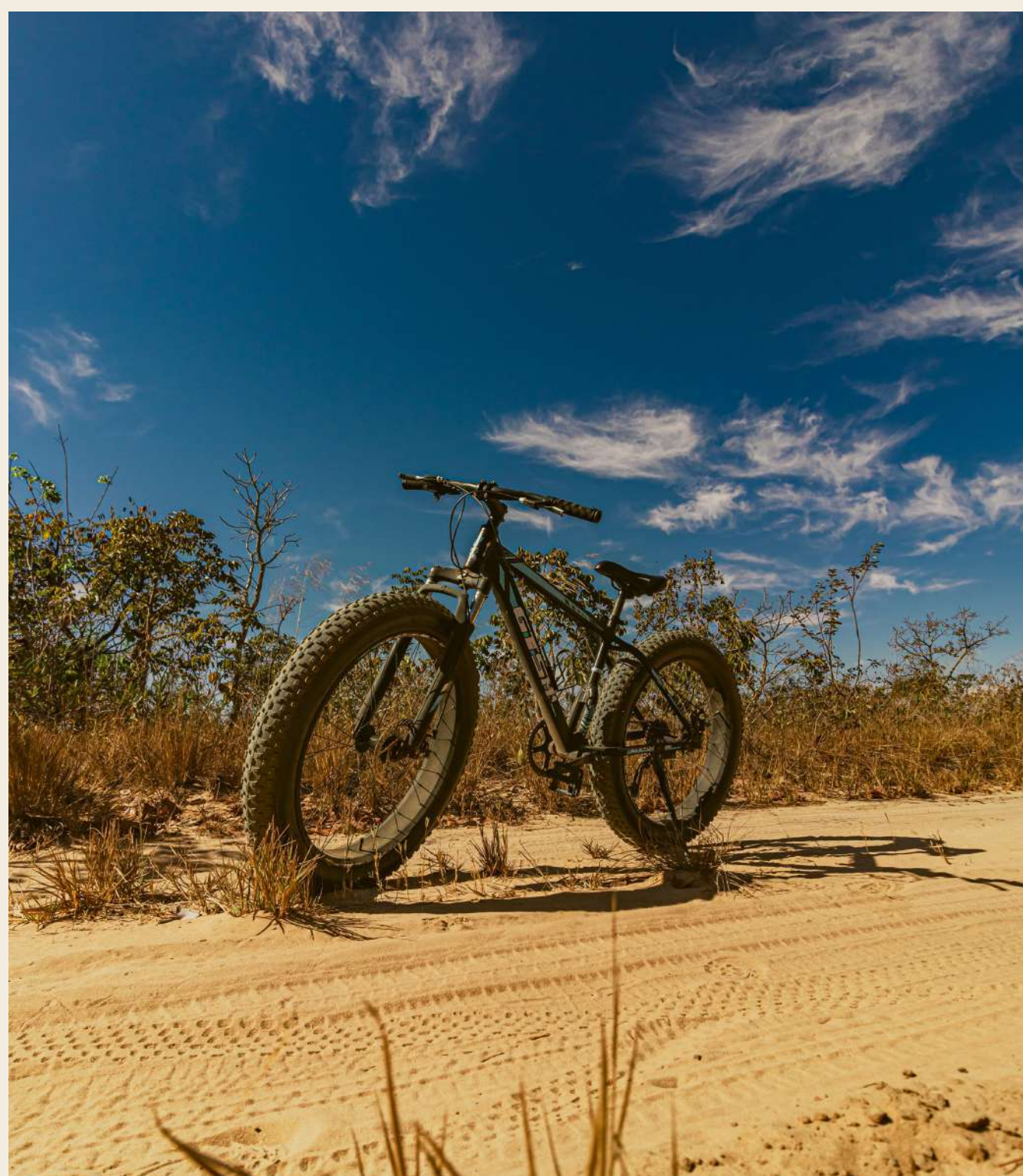
DAY OUTINGS



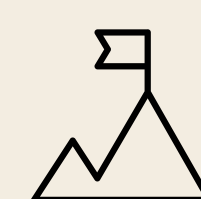
5H DURATION

# FAT BIKE SAFARIS

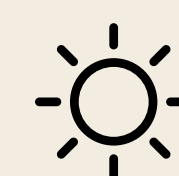
NOT SKINNY. FAT BIKES FOR RIDING ON FARM ROADS,  
FEEL THE WIND AND OBSERVE BIODIVERSITY UP CLOSE.



- FAT BIKES ADAPTED TO THE GROUND
- IDEAL FOR RIDING ON UNEVEN TERRAIN
- PERFECT FOR ROUTES FROM 3 TO 10KM
- ON THE WAY, THERE IS THE OPPORTUNITY TO OBSERVE THE FAUNA AND FLORA OF THE CERRADO



MODERATE (BIKE)



DAYTIME OUTINGS



3 H DURATION  
(BIKE + KAYAK)

# NIGHT SAFARI

A NIGHT JOURNEY IN THE CERRADO, WAITING FOR THE OPPORTUNITY TO OBSERVE A DIVERSITY OF ANIMALS UNDER A STARRY SKY. NIGHT NAVIGATION IN LAGOA DAS ARARAS IN SEARCH OF THE DWARF CAIMAN.



• ALONG THE WAY, IT IS POSSIBLE TO OBSERVE THE FAUNA AND FLORA OF THE CERRADO, WHICH HAS NOCTURNAL HABITS.

• DEPENDING ON THE TIME OF YEAR, THE STARRY SKY OVER THE LAGOA DAS ARARAS ENRICHED THE EXPERIENCE IN AN UNFORGETTABLE WAY.



LIGHT (SAFARI CAR)



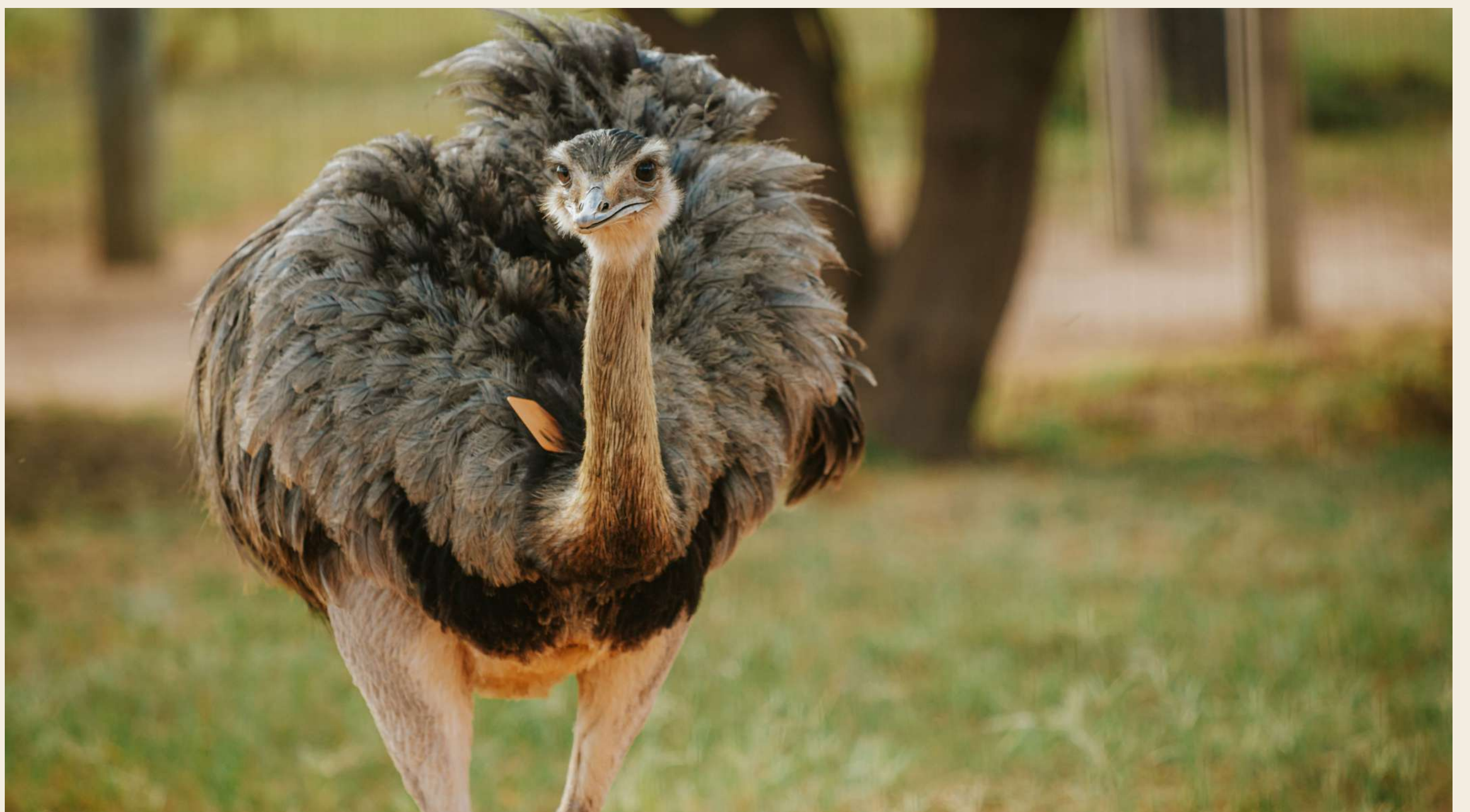
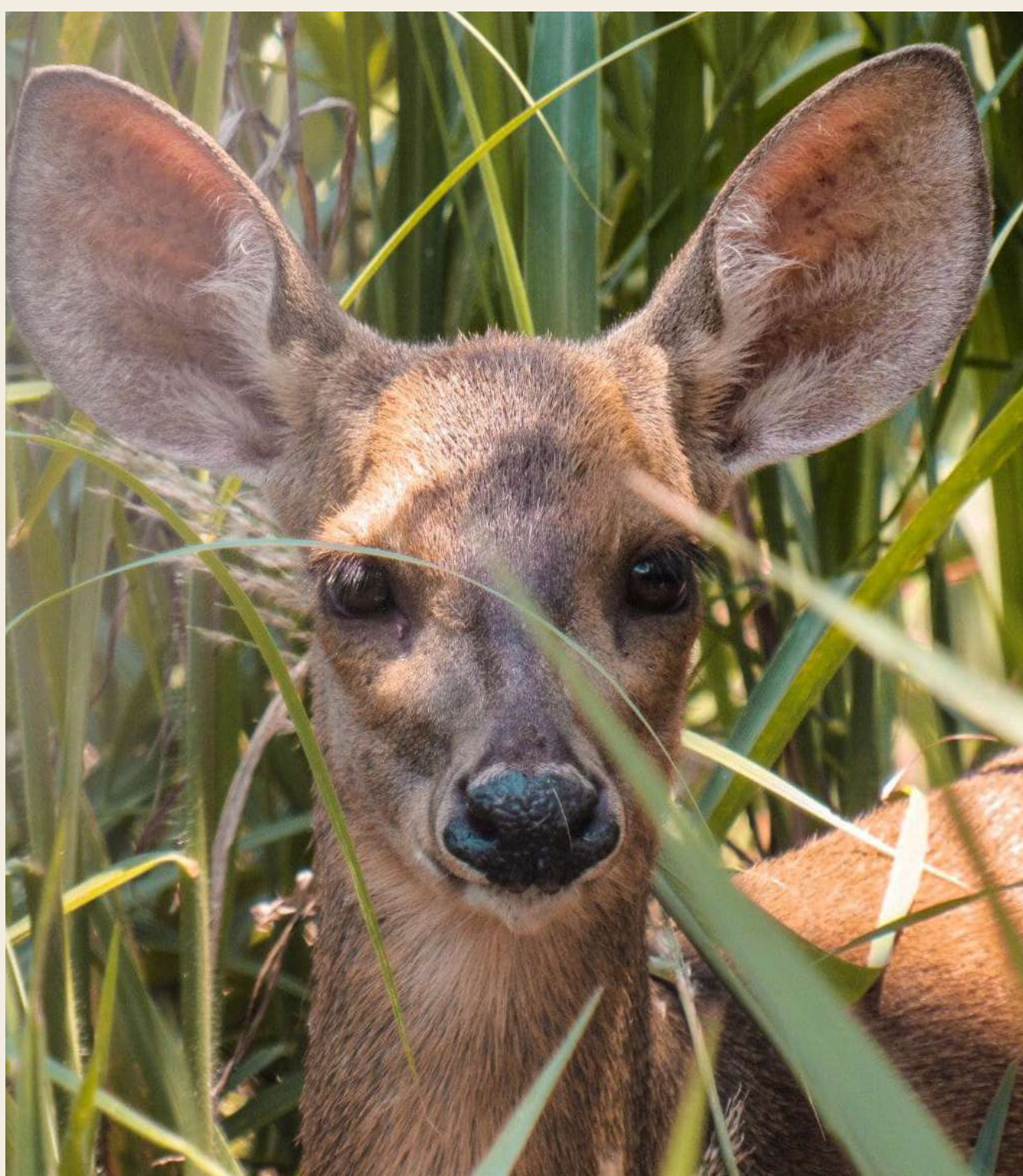
NIGHT OUTS



2 TO 3H  
DURATION

# WILDLIFE CONSERVATION

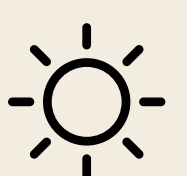
AN INVITATION TO GET TO KNOW A CONSERVATION BREEDING AND RELEASE  
AREA FOR WILD ANIMALS SUCH AS RHEAS, DEER, TAPIRS, PECCARIES,  
AND MANED WOLVES, AMONG OTHER SPECIES.



- CONSERVATION BREEDING CENTER (REGISTERED AS IBAMA 511082)  
HOUSING PECCARIES, RHEAS, DEER, AND TAPIRS.
- CONSERVATION PROJECT AND THE PROTECTION OF WILD SPECIES
- EXPERT-LED TOURS PROVIDE IN-DEPTH INSIGHTS.
- THE MULTIDISCIPLINARY TEAM INCLUDES BIOLOGISTS, ZOOTECHNICIANS,  
VETERINARY DOCTORS, AND TRAINED COLLABORATORS.



LIGHT (CAR)



DAYTIME OUTINGS



3H DURATION

The background is a pixelated, low-resolution image of a natural scene. It shows a dirt path or stream bed leading from the foreground towards a body of water in the distance. The surrounding area is filled with trees and foliage, with colors ranging from dark browns and greens to lighter blues and greys, suggesting a misty or overcast day. The overall texture is very grainy and blocky.

# SOCIAL AND CORPORATE EVENTS



# SOCIAL AND CORPORATE EVENTS

THE POUSADA TRIJUNÇÃO IS A RETREAT BY NATURE.  
A LODGE FAR FROM THE USUAL MEETING PLACE.

- PRIVATE AND EXCLUSIVE ENVIRONMENT, PERFECT FOR BUYOUTS
- THE EXPERIENCES AGENDA CAN BE CUSTOMIZED FOR THE GROUP.
- OUTDOOR GATHERINGS, FROM SUNRISE TO STARRY NIGHTS, IN DIFFERENT SETTINGS EACH DAY: LAGOON, VIEWPOINT, PICNIC TRAIL, SAFARIS.
- INTEGRATION WITH NATURE, THE RHYTHM OF THE PLACE, AND RECONNECTION WITH OUR INNER SELVES.
- ALL EXPERIENCIES ARE GUIDED BY A TEAM OF BIOLOGIST AND BIOME EXPERTS.

# INSPIRING AND INTEGRATING SPACES

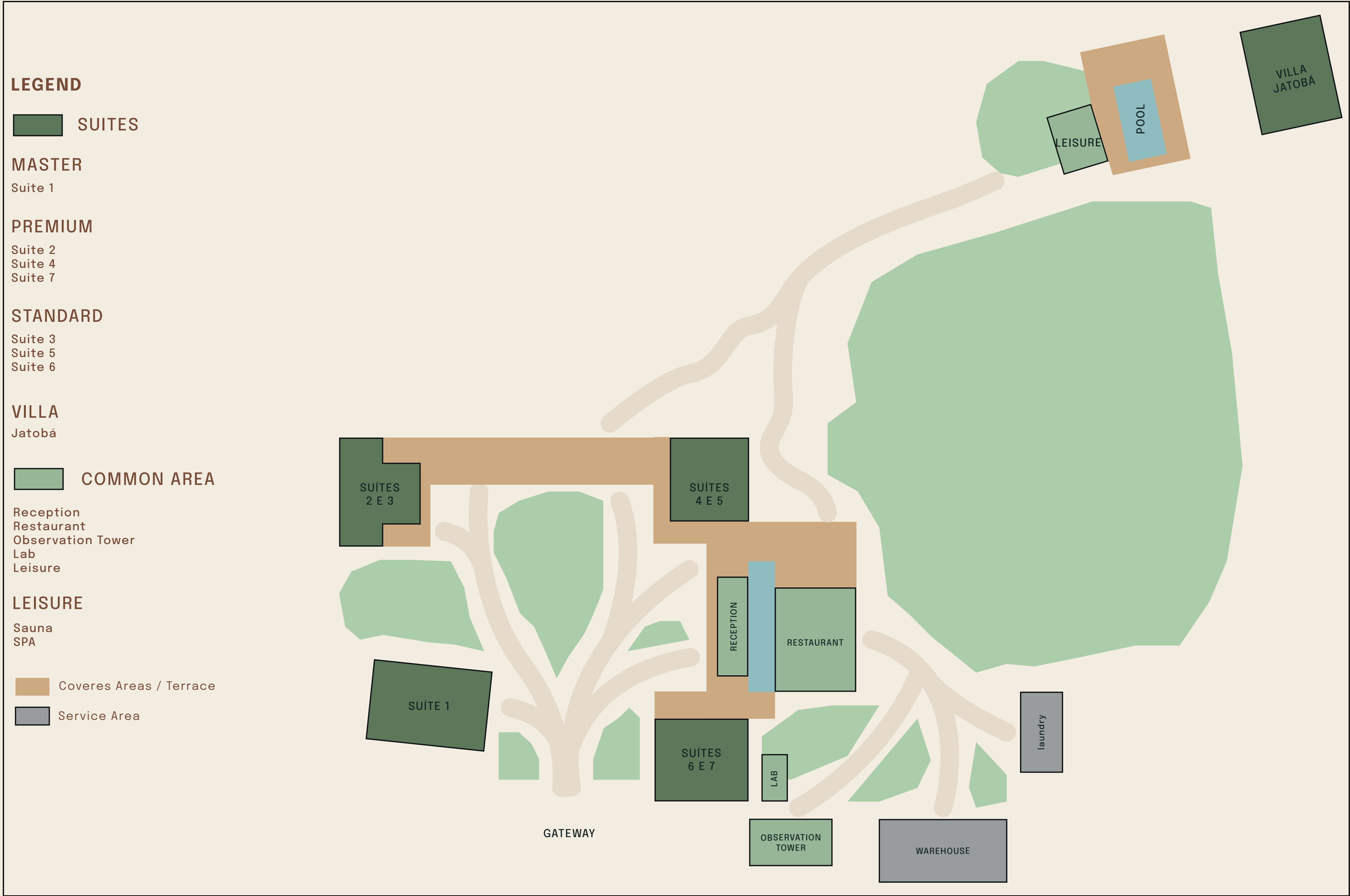
PLACE	M²
RESTAURANT	60M²
DECK BAR (WITHOUT COVER)	28M²
RECEPTION	80M²
COMMUNAL TERRACE	110M²
OPEN AREA - SWIMMING POOL	ESPAÇO ABERTO
EACH AMBIENT CAN BE ADAPTED TO THE NEEDS OF THE EVENT. THE AGENDA OF EXPERIENCES IS PERSONALIZED FOR EACH GROUP.	



# INSPIRING AND INTEGRATING SPACES



# MAP OF THE POUSADA



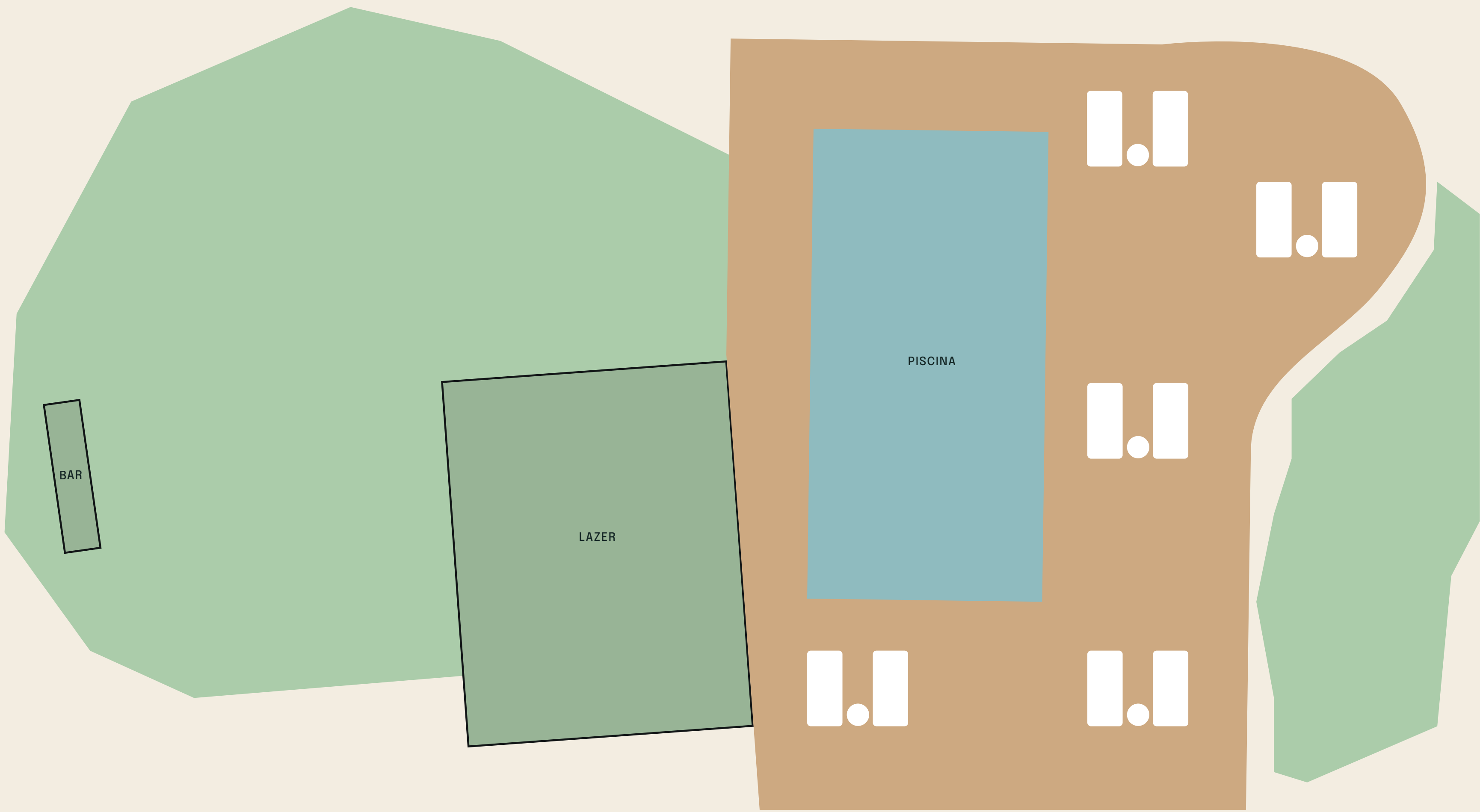
# MAP OF THE LEISURE AREA

LEGENDA

- ÁREAS COMUNS
- Bar
- Sauna
- SPA

LAZER

- Sauna
- SPA
- Deck

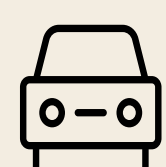


# LOCALIZATION

THE TRIJUNÇÃO IS IN THE HEART OF THE CERRADO, 333.7 KM FROM BRASÍLIA.



## ARRIVING FROM:



CAR

5H30 DRIVE FROM  
BRASILIA AIRPORT



AIRPLANE

50 MINUTES FROM  
BRASILIA AIRPORT

THE POUSADA HAS AN  
AIRSTRIP FOR PRIVATE PLANES  
AND OFFERS CHARTER FLIGHTS  
FOR UP TO 8 PASSENGERS.

# SEASONS



## DRY SEASON

- APRIL TO SEPTEMBER
- HOT DAYS, INTENSE COLD IN THE MORNING AND AT NIGHT
- ORANGE-COLORED LOW VEGETATION
- CLEAR SKY: MOST BEAUTIFUL SUNRISE AND SUNSET OF THE YEAR, CHANCE TO SEE THE MILKY WAY WITH THE NAKED EYE

## WET SEASON

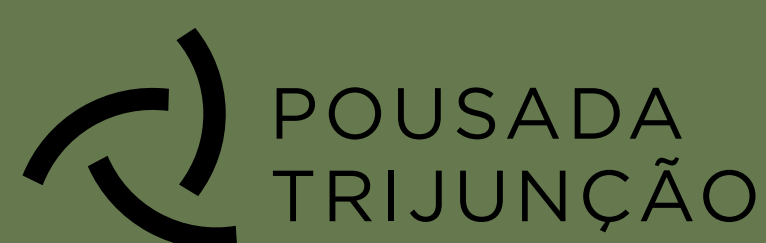
- OCTOBER TO MARCH
- RAIN MAKES THE CLIMATE MORE MILD
- FLOWERS BLOOM AND EXOTIC FRUITS COLOR THE TREES
- LAGOON IS AT ITS HIGHEST LEVEL, READY TO RECEIVE MIGRATORY SPECIES

## PERFECT DESTINATION FOR:

- BLENDING NATURE AND COMFORT
- TRAVELERS LOOKING FOR TRIPS THAT COMBINE BEACH, POOL AND GOOD FOOD
- OUTDOOR ENTHUSIASTS: SNORKELING, STAND-UP PADDLEBOARDING, HIKING, AND TREKKING
- PEACEFUL RETREAT SEEKERS
- COUPLES, FAMILIES AND GROUPS OF FRIENDS



FEEL. SEE. LISTEN.  
TOUCH. TASTE. TRAVEL.



## MORE INFORMATION:

[WWW.OCANTODOBRASIL.COM.BR](http://WWW.OCANTODOBRASIL.COM.BR)

[INSTAGRAM.COM/OCANTO.BR](https://www.instagram.com/ocanto.br)

[YOUTUBE.COM/@OCANTODOBR](https://www.youtube.com/@ocantodobr)

[WWW.POUSADATRIJUNCAO.COM.BR](http://WWW.POUSADATRIJUNCAO.COM.BR)

[INSTAGRAM.COM/POUSADATRIJUNCAO](https://www.instagram.com/pousadatrijuncao)

RESERVAS:

[RESERVAS@POUSADATRIJUNCAO.COM.BR](mailto:RESERVAS@POUSADATRIJUNCAO.COM.BR)  
+55(11)2770.0237

CAROLINA PEGORARO

11 96268-0010

[CAROLINA.PEGORARO@OCANTODOBRASIL.COM.BR](mailto:CAROLINA.PEGORARO@OCANTODOBRASIL.COM.BR)



DOWNLOAD PHOTOS POUSADA TRIJUNÇÃO



# OCANTO

 Pousada Literária  
de Paraty

 FAZENDA  
BANANAL

 TUTABEL 

 POUSADA  
TRIJUNÇÃO